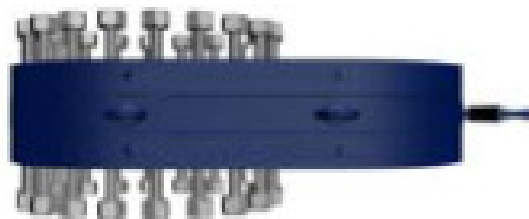
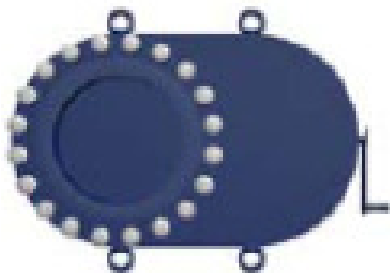
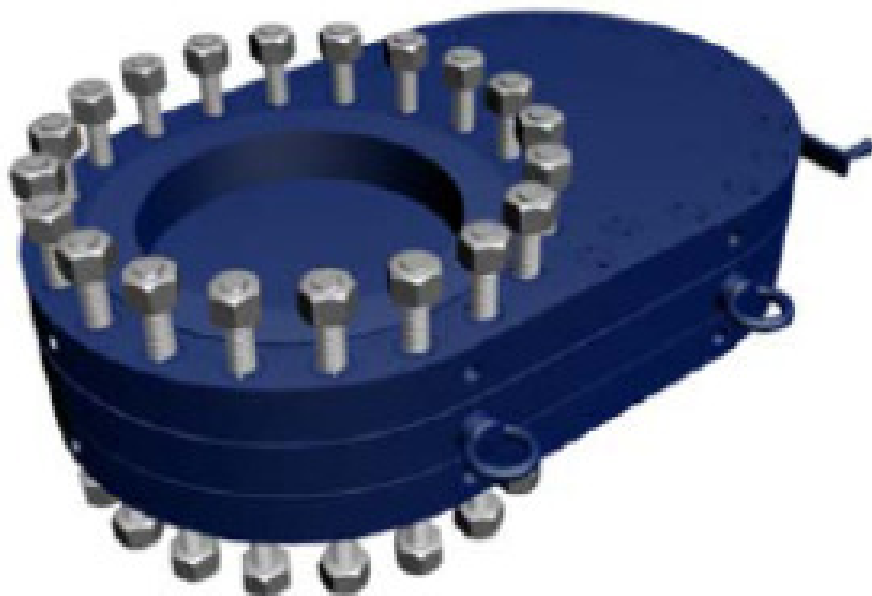




Maintenance of Slim Valves



MAINTENANCE

Clean the valve completely after each use. The bedding of the o-ring in the gate must be cleaned carefully. The o-rings should be changed, if they appear bulged or extremely hard or soft. The o-rings must be checked in search of cuts or deterioration of its surface.



TECPESA recommends changing the o-rings, IF LEAKAGE EXISTS.



O-ring of body valve

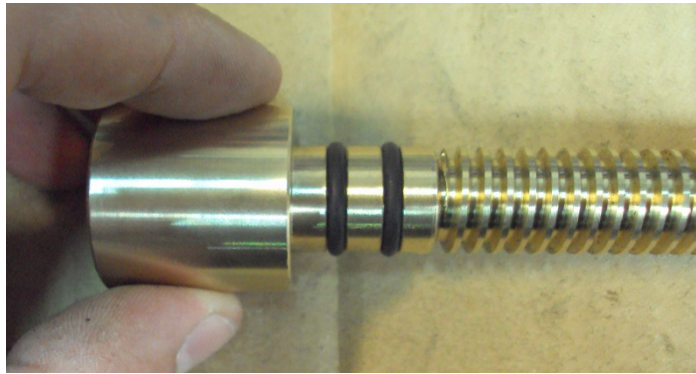


O-ring of flap gate

Other parts which need maintenance are the o-rings of the bypass, both the body and the action screw and the teflon of the bypass screw.



Teflon bypass screw



O-ring threaded shaft



O-ring of body bypass and screw



Installation of the screw into the valve socket



Installation of the plate protection of the bypass screw



The o-ring of the bypass should be changed if leakage through the bypass or when operating at high temperature.

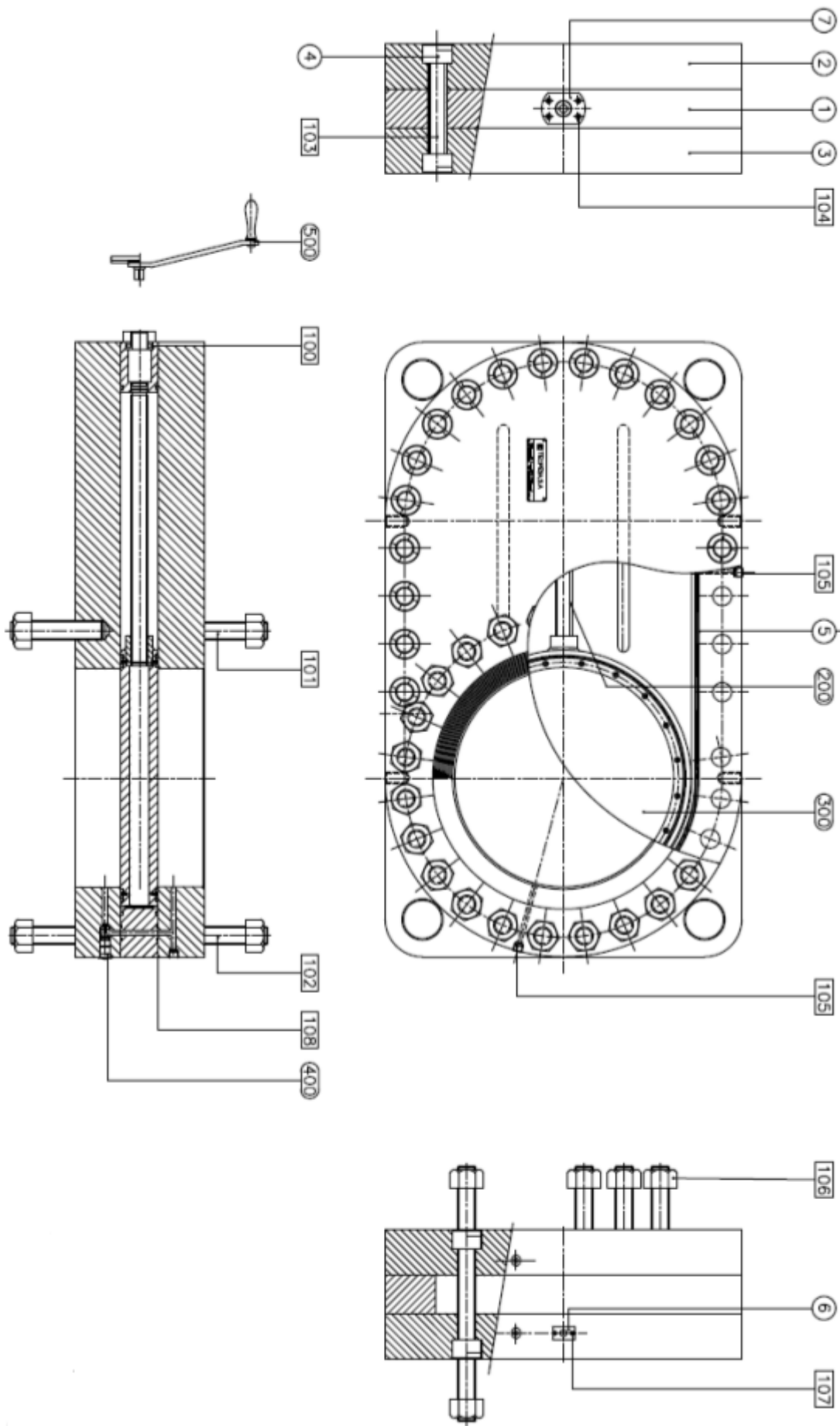
If there is leakage in the axis of the flap gate, replace the stopper.



Changing the Stopper in the axis of the flap gate

Check the tightening of the screws (4 items).

DRAWING AND PART LIST OF HAND OPERATED SLIM VALVE

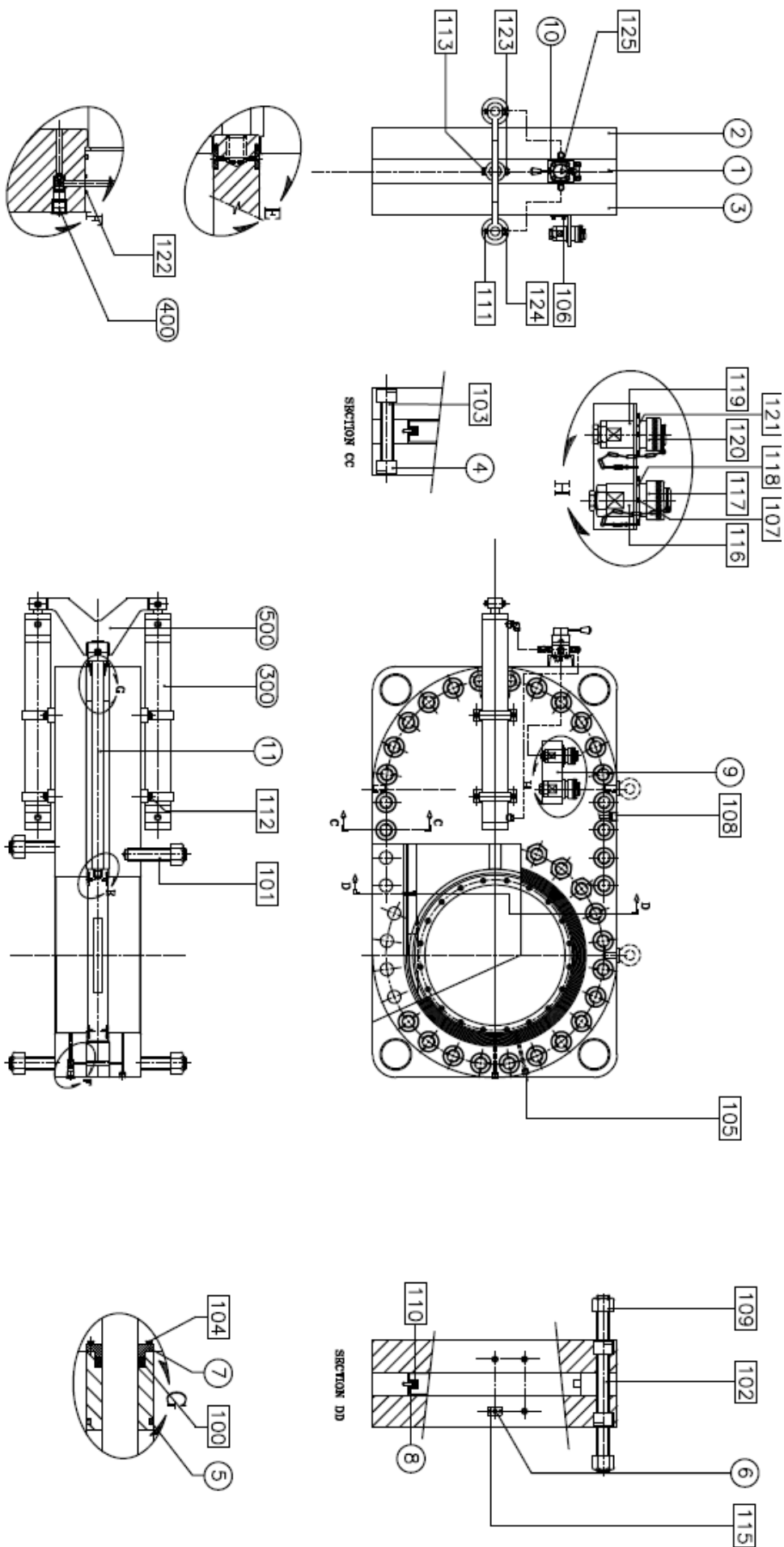


| ITEM | BOUGHT IN PART DESCRIPTION | PART NUMBER |
|------|----------------------------|----------------|
| 100 | THRUST BEARING | TBL-SVXX60-100 |
| 101 | FLANGE STUD | TBL-SVXX60-101 |
| 102 | THROUGH STUD | TBL-SVXX60-102 |
| 103 | BODY STUD | TBL-SVXX60-103 |
| 104 | SOCKET HEAD CAP SCREW | TBL-SVXX60-104 |
| 105 | HEXAGON SOCKET PIPE PLUG | TBL-SVXX60-105 |
| 106 | HEAVY SERIES NUT | TBL-SVXX60-106 |
| 107 | BUTTON HEAD SOCKET SCREW | TBL-SVXX60-107 |
| 108 | O RING | TBL-SVXX60-108 |

| ITEM | SINGLE ITEM DRAWING DESCRIPTION | DRG. No. |
|------|---------------------------------|----------------|
| 1 | VALVE CENTRE SECTION | TBL-SVXX60-001 |
| 2 | VALVE SIDE SECTION | TBL-SVXX60-002 |
| 3 | VALVE SIDE SECTION | TBL-SVXX60-003 |
| 4 | QUARTER NUT | TBL-SVXX60-004 |
| 5 | BODY SEAL | TBL-SVXX60-005 |
| 6 | BYPASS CLOSEURE PLATE | TBL-SVXX60-006 |
| 7 | STEM CLOSEURE PLATE | TBL-SVXX60-007 |

| ITEM | ASSEMBLY DESCRIPTION | DRG. No. |
|------|-----------------------|----------------|
| 200 | VALVE STEM ASSEMBLY | TBL-SVXX60-200 |
| 300 | VALVE GATE ASSEMBLY | TBL-SVXX60-300 |
| 400 | BYPASS VALVE ASSEMBLY | TBL-SVXX60-400 |
| 500 | HANDLE ASSEMBLY | TBL-SVXX60-500 |

DRAWING AND PART LIST OF HYDRAULIC SLIM VALVE



| ITEM BOUGHT IN PART DESCRIPTION | PART NUMBER |
|---------------------------------|----------------|
| 100 GLAND SEAL | TBL-SVXX60-100 |
| 101 FLANGE STUD | TBL-SVXX60-101 |
| 102 THROUGH STUD | TBL-SVXX60-102 |
| 103 BODY STUD | TBL-SVXX60-103 |
| 104 SOCKET HEAD CAP SCREW | TBL-SVXX60-104 |
| 105 HEXAGON SOCKET PIPE PLUG | TBL-SVXX60-105 |
| 106 SOCKET HEAD CAP SCREW | TBL-SVXX60-106 |
| 107 SOCKET HEAD CAP SCREW | TBL-SVXX60-107 |
| 108 HEXAGON SOCKET PIPE PLUG | TBL-SVXX60-108 |
| 109 HEAVY SERIES NUT | TBL-SVXX60-109 |
| 110 SOCKET HEAD CAP SCREW | TBL-SVXX60-110 |
| 111 SOCKET HEAD CAP SCREW | TBL-SVXX60-111 |
| 112 SOCKET HEAD CAP SCREW | TBL-SVXX60-112 |
| 113 SOCKET HEAD CAP SCREW | TBL-SVXX60-113 |
| 114 SOCKET HEAD CAP SCREW | TBL-SVXX60-114 |
| 115 BUTTON HEAD SOCKET SCREW | TBL-SVXX60-115 |
| 116 RETURN COUPLING | TBL-SVXX60-116 |
| 117 RETURN CAP AND CHAIN | TBL-SVXX60-117 |
| 118 RETURN FLANGE | TBL-SVXX60-118 |
| 119 PRESSURE COUPLING | TBL-SVXX60-119 |
| 120 PRESSURE CAP AND CHAIN | TBL-SVXX60-120 |
| 121 PRESSURE FLANGE | TBL-SVXX60-121 |
| 122 O RING | TBL-SVXX60-122 |
| 123 NYLOC NUT | TBL-SVXX60-123 |
| 124 NYLON NUT | TBL-SVXX60-124 |
| 125 DIRECTIONAL CONTROL VALVE | TBL-SVXX60-125 |

| ITEM | SINGLE ITEM DRAWING DESCRIPTION | DRG. No. |
|------|-----------------------------------|-----------------|
| 1 | VALVE CENTRE SECTION | TBL-SVXX60-0001 |
| 2 | VALVE SIDE SECTION | TBL-SVXX60-0002 |
| 3 | VALVE SIDE SECTION | TBL-SVXX60-0003 |
| 4 | QUARTER NUT | TBL-SVXX60-0004 |
| 5 | BODY SEAL | TBL-SVXX60-0005 |
| 6 | BYPASS CLOSEURE PLATE | TBL-SVXX60-0006 |
| 7 | STEM CLOSEURE PLATE | TBL-SVXX60-0007 |
| 8 | GATE GUIDE | TBL-SVXX60-0008 |
| 9 | HYDRAULIC CONNECTOR BRACKET | TBL-SVXX60-0009 |
| 10 | DIRECTIONAL CONTROL VALVE BRACKET | TBL-SVXX60-0010 |
| 11 | STEM | TBL-SVXX60-0011 |

| ITEM | ASSEMBLY DESCRIPTION | DRG. No. |
|------|------------------------|-----------------|
| 200 | VALVE GATE ASSEMBLY | TBL-SVXX60-0200 |
| 300 | ACTUATOR RAM ASSEMBLY | TBL-SVXX60-0300 |
| 400 | BYPASS VALVE ASSEMBLY | TBL-SVXX60-0400 |
| 500 | RAM CONNECTOR ASSEMBLY | TBL-SVXX60-0500 |



TECPESA-TBL

Parménides, 8- Edificio 1

Pol. Emp. La Garena 28806

Alcalá de Henares

MADRID

Tel: +34 91 879 79 75

Fax: +34 91 883 20 22

Email: info@tecpesa.es

Home Page: www.tecpesa.com